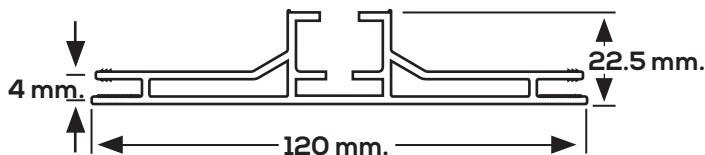
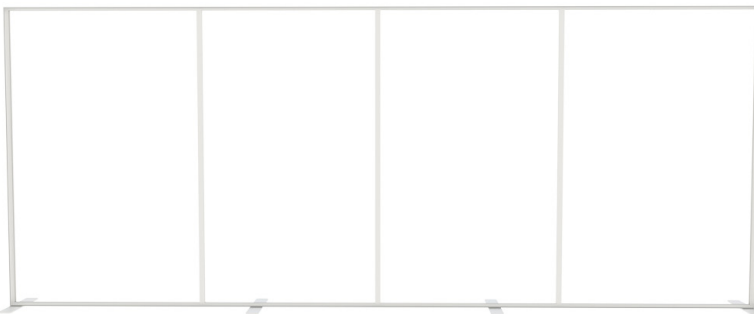




LIGHTS ON



LIGHTS OFF



## Product Features

The VAIL-120DB 20ft Wide BACKLIT Freestanding Display is designed for impactful, illuminated presentations, perfect for events, trade shows, and retail environments. Featuring a robust, silver anodized aluminum profile extrusion, this display utilizes the VAIL-120DB profile, measuring 120mm wide (4.7 inches), providing excellent structural support and a sleek finish.

This system is designed to showcase custom dye-sublimated backlit fabric graphics with SEG (Silicone Edge Graphic) finishing for fast and easy graphic installation and swap-outs. The frame is illuminated by LED edge lights positioned along the top and bottom, delivering even, vibrant lighting across your graphics. Installation is hassle-free with plug-and-play LED lights and a transformer.

The VAIL-120DB display is capable of presenting single or double-sided graphics, making it versatile for various promotional setups. It's available in 8ft and 10ft heights, giving you flexibility for different environments and applications. Side-mounted and bottom-mounted feet provide stability, ensuring your display remains secure, even in high-traffic areas.

*\*Please check your tradeshow guidelines to make sure this configuration conforms to the show regulations.*

## Specs

### Display Features:

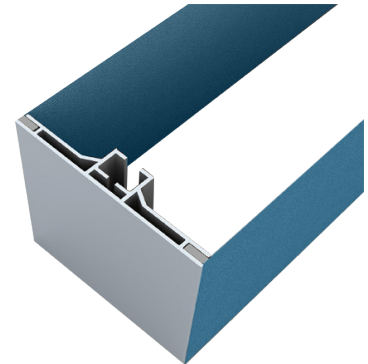
- Display Dimensions: 240"W x 96"H x 24"D
- 120mm (4.7in.) wide aluminum profile
- Double-sided graphic display
- Accepts 12mm x 3mm.keder
- Freestanding display
- Backlit with LED Edge Lights

### Details:

- Material: Stretch Fabric (FAB-STRETCH)
- Print Process: Paper Transfer Dye Sub Printing
- Shipping Weights and Dimensions:
- Single Sided Graphic Package  
160 lbs (Total) - 97" L x 10" W x 7" D ( 2 boxes)
- Double Sided Graphic Package  
160 lbs (Total) - 97" L x 10" W x 7" D ( 2 boxes)
- Hardware Only  
140 lbs -(Total) 97" L x 10" W x 7" D ( 2 boxes)
- Graphic Only  
10 lbs - Polybag (1 replacement graphic panel)

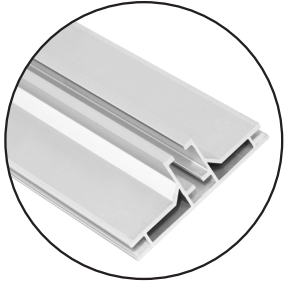


VAIL-120DB PROFILE

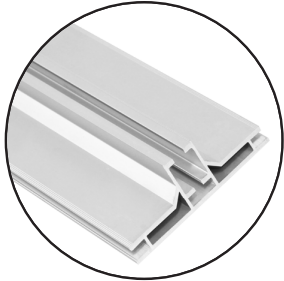


w/GRAPHICS INSTALLED

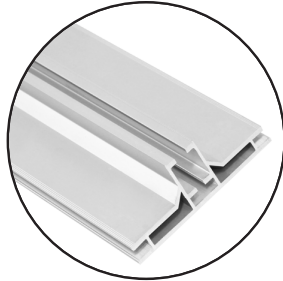
## PARTS LIST



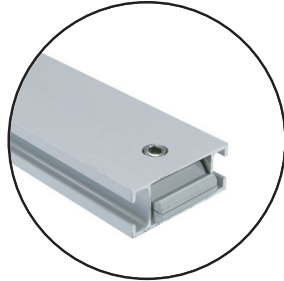
Horizontal Profile 60" End  
SKU: VAIL-120DB  
(qty 4)



Horizontal Profile 60" Middle  
SKU: VAIL-120DB  
(qty 4)



Vertical Profile 48"  
SKU: VAIL-120DB  
(qty 4)



Vertical Strut  
SKU: VAIL-MAM-40C  
(qty 6)



Resort Vail Triangle Corner Lock  
SKU: RESORT-TFCRNR  
a(qty 4)



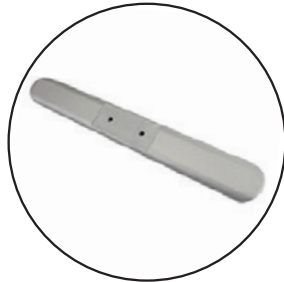
Resort Tool Free Center Connector  
SKU: RESORT-TFCNT  
(qty 8)



Resort Center Connector  
SKU: AF-CENTCON  
(qty 3)



VAIL Side Feet w/Hardware Set  
SKU: VAIL-SF-SET  
(qty 2 sets)  
Set Includes: 2 feet, 4 bolts,  
4 washers, 4 wingnuts



VAIL Bottom Feet w/Hardware Set  
SKU: VAIL-BF-SET  
(qty 2 sets)  
Set Includes: 2 feet, 4 bolts,  
4 washers, 4 wingnuts



5mm Allen Key  
SKU: ALLEN-4mm  
(qty 1)



Mammoth Transformer  
SKU: MAM-TSFM  
(qty 1)  
Includes 6ft Power Cord



Resort Light Strip  
SKU: RESORT-LS  
(qty 30)



Wiring Kit  
SKU: LAMP WIRE &  
WHISTLER-P/WIRE  
(qty 7)



La Caja Hardcase  
SKU: LACAJA  
(qty 2)

## LED LIGHT AND TRANSFORMER INFORMATION



MAMMOTH TRANSFORMER  
SKU: MAM-TSFM  
(qty 1)



LIGHTS INSTALLED ON FRAME



RESORT LED LIGHT STRIP  
SKU: RESORT-LS  
14.5" L x .75" W

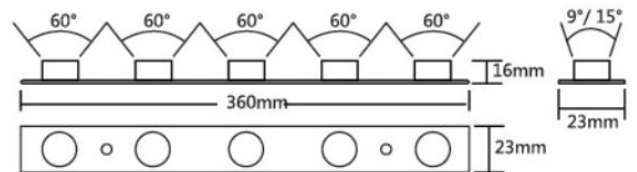
### TRANSFORMER SPECIFICATIONS

AC-DC Single output LED driver Mix mode (CV+CC) with built-in PFC; Output 24Vdc at 10A; IP65; Cable output; Dimming with Potentiometer

Height	38.8 mm
Length	244.2 mm
Width	68 mm
Mounting Style	Panel Mount
Input Voltage	90 VAC to 305 VAC, 127 VDC to 431 VDC
Number of Outputs	1 Output
Open Frame-Enclosed	Enclosed
Output Power	240 W
Industry	Industrial
Output Current-Channel 1	10 A
Output Voltage-Channel 1	24 VDC
Operation Mode	CV + CC
Dimming	Without Dimming
Standard	PSE
IP Rating	IP65
Control Signals	Potentiometer
Dimming Technology	Analog Potentiometer
Certifications	UL Listed

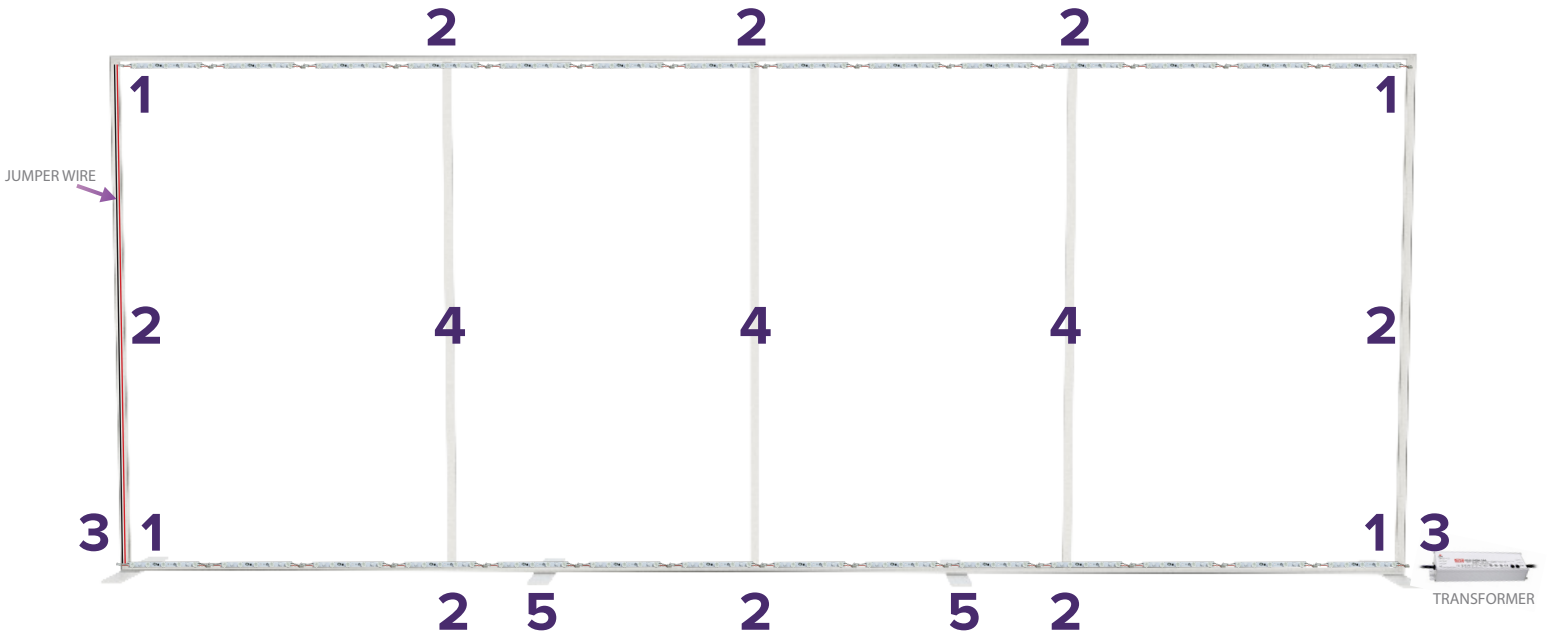
### LED STRIP SPECIFICATIONS (PER STRIP)

Power	10 W per strip (2W per LED)
Input Voltage	DC24±0.5V
Color Temperature	6000-7000k
Angle	9°*50°/15°*60°
Certifications	ETL & CE Certifications
Lamp Type	CREE
Lumen	750-800LM (150-160LM *5)
Light Strip Dims	14.5" L x .75" W (L includes wires/connectors)

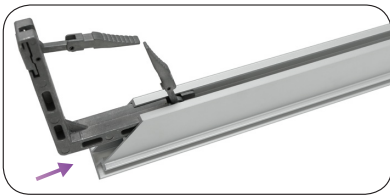


BEAM ANGLE

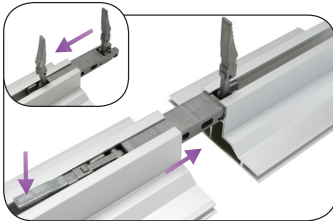
## SETUP INSTRUCTIONS



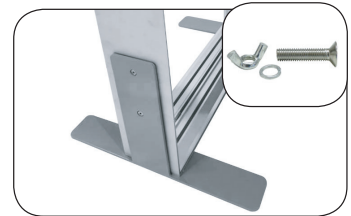
### 1 TOOL FREE CORNER



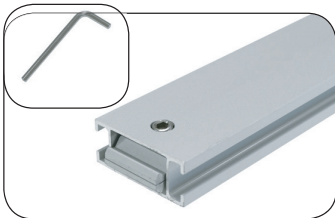
### 2 TOOL FREE SPLIT CONNECTOR



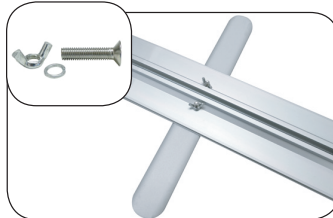
### 3 VAIL SIDE FOOT



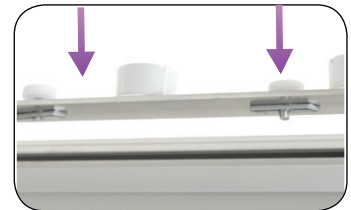
### 4 VERTICAL STRUT



### 5 VAIL BOTTOM FOOT



### 6 LED STRIPS



15 LIGHT STRIPS TOP& BOTTOM  
W/JUMPER WIRE CONNECTING  
TOP AND BOTTOM LIGHTS