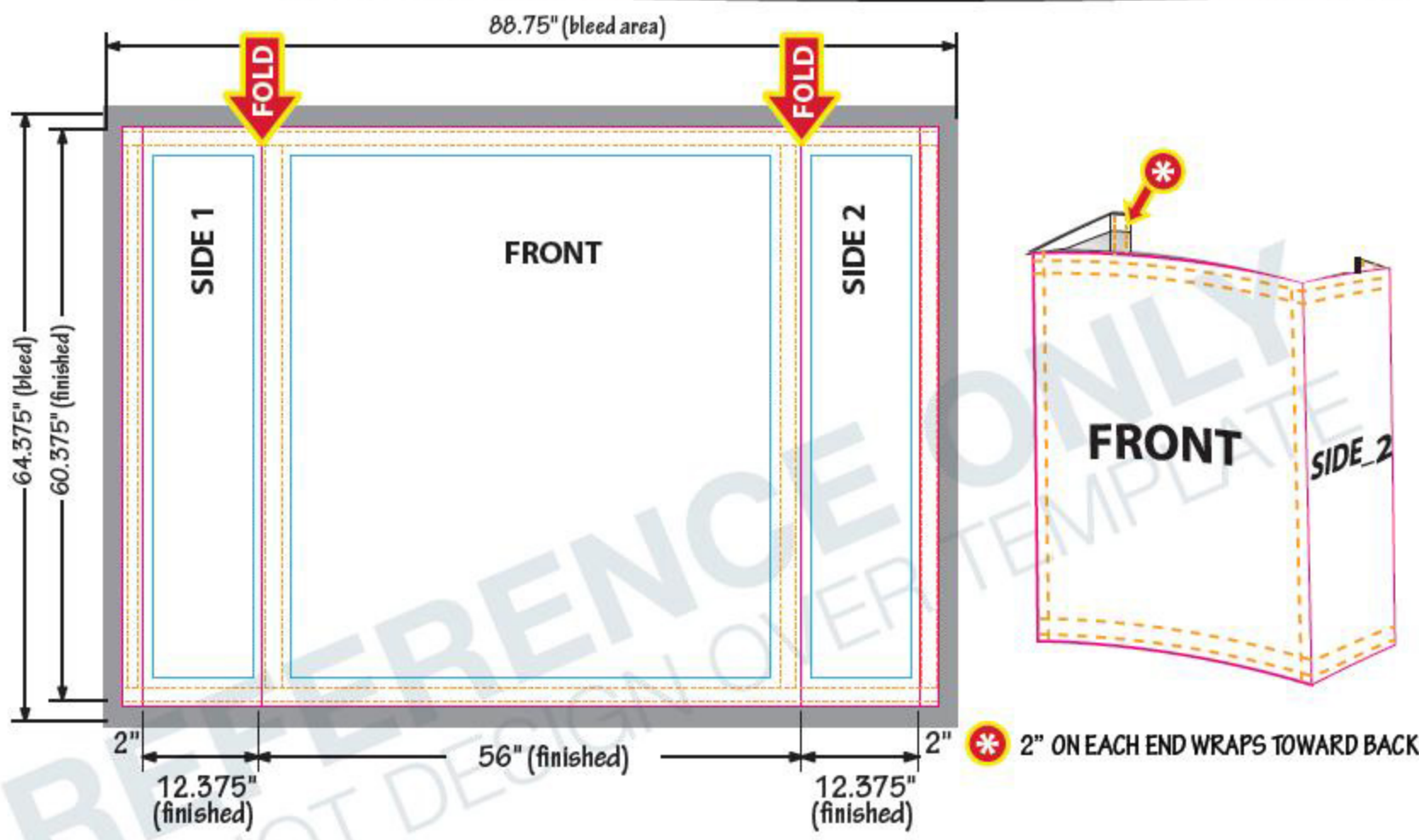


6' Curved Splash / End Wrap (Dye-Sub Full Bleed)

2Quad W x 2 Quad H

Kit Item# 341013
Banner Only Item# 341015



TEMPLATE KEY

- = BLEED AREA
- = FINISHED SIZE
- = SAFE AREA
- = STITCH LINE

BLEED AREA

88.75"W x 64.375"H
(2" on all sides)

Area of art that is used for finishing product. Background color/image should extend into this area.

FINISHED SIZE 84.75"W x 60.375"H

FRONT: 56"W x 60.375"H	SIDES: 12.375"W x 60.375"H
---------------------------	-------------------------------

Area of art that is visible after finishing product. Background color/image should extend into the bleed area.

STITCH LINE

double stitch top and bottom from velcro
double stitch around face perimeter

SAFE AREA

FRONT/BACK: 49.75"W x 54.125"H	SIDES: 10.375"W x 54.125"H
-----------------------------------	-------------------------------

Recommended area to place artwork. Artwork within this area will be safe from variance in cut of finished edge /stitch line.

Using PMS colors in your art is recommended but an exact match cannot be guaranteed.

Dye-Sub products are printed CMYK (4 color) process from your art file.

FOR REFERENCE ONLY
PLEASE SEND IN ART SET UP TO FULL SIZE
layout guide on page 2

- All images must be embedded
- All fonts must be outlined.

ACCEPTABLE FILE FORMATS:



- Adobe Illustrator (.ai, .pdf, .eps)
- All Fonts Outlined
- Images Embedded



- Adobe Photoshop (.psd, .tif, .jpg)
- 200 DPI at 100% Scale